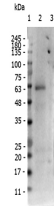


## Product Datasheet

### receptor ROR gamma pS203 (RABBIT) Antibody GRP3755

<b>Description</b>	Anti-receptor ROR gamma pS203 (RABBIT) Antibody
<b>Species/Host</b>	Rabbit
<b>Reactivity</b>	Mouse
<b>Conjugation</b>	Unconjugated
<b>Tested Applications</b>	ELISA, WB
<b>Form/Appearance</b>	0.02 M Potassium Phosphate, 0.15 M Sodium Chloride, pH 7.2
<b>Concentration</b>	1.05 mg/ml
<b>Storage</b>	Store vial at -20 °C prior to opening. This product is stable at 4 °C as an undiluted liquid. For extended storage, aliquot contents and freeze at -20 °C or below. Avoid cycles of freezing and thawing. Dilute only prior to immediate use.
<b>Note</b>	For research use only.
<b>Isotype</b>	IgG
<b>Clonality</b>	Polyclonal
<b>Source</b>	Affinity purified Anti-receptor ROR gamma pS203 antibody was prepared from whole rabbit serum produced by repeated immunizations with an internal synthetic peptide phosphorylated at the serine 203 position of mouse receptor ROR gamma protein.
<b>Uniprot ID</b>	<b>P51450</b>
<b>Entrez</b>	<a href="https://www.ncbi.nlm.nih.gov/gene//19885">https://www.ncbi.nlm.nih.gov/gene//19885</a>
<b>Dilution Range</b>	ELISA: 5 ug/mL, Western Blot: 1 ug/mL



Western blot of  
Anti-receptor  
ROR gamma pS203  
Antibody