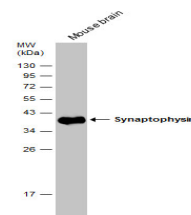


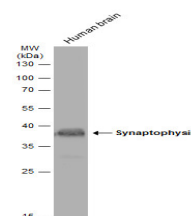
Product Datasheet

Synaptophysin antibody GRP98

| | |
|----------------------------|--|
| Description | Synaptophysin (p38) is an integral membrane protein of small synaptic vesicles in brain and endocrine cells.[supplied by OMIM] |
| Species/Host | Rabbit |
| Reactivity | Human, Mouse, Rat |
| Conjugation | Unconjugated |
| Tested Applications | ICC, IF, IHC-Fr, IHC-P, WB |
| Immunogen | Recombinant protein encompassing a sequence within the C-terminus region of human Synaptophysin. The exact sequence is proprietary. |
| Form/Appearance | Liquid: 1XPBS, 20% Glycerol (pH7). 0.025% ProClin 300 was added as a preservative. |
| Concentration | 0.25 mg/ml |
| Storage | Store as concentrated solution. Centrifuge briefly prior to opening vial. For short-term storage (1-2 weeks), store at 4°C. For long-term storage, aliquot and store at -20°C or below. Avoid multiple freeze-thaw cycles. |
| Note | For research use only. |
| Isotype | IgG |
| Clonality | Polyclonal |
| Purity | Purified by antigen-affinity chromatography. |
| Uniprot ID | P08247 |
| Entrez | 6855 |
| Dilution Range | WB: 1:500-1:50000, ICC: 1:100-1:1000, IHC-P: 1:100-1:1000 |



Mouse tissue extract (50 µg) was separated by 12% SDS-PAGE, and the membrane was blotted with Synaptophysin antibody (GRP550) diluted at 1:50000. The HRP-conjugated anti-rabbit IgG antibody was used to detect the primary antibody.



Human tissue extract (30 µg) was separated by 12% SDS-PAGE, and the membrane was blotted with Synaptophysin antibody (GRP550) diluted at 1:500. The HRP-conjugated anti-rabbit IgG antibody was used to detect the primary antibody, and the signal was developed.