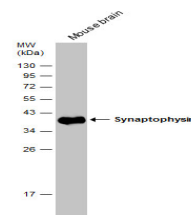


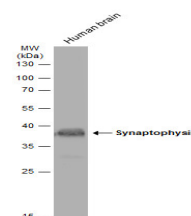
Product Datasheet

Synaptophysin antibody GRP98

Description	Synaptophysin (p38) is an integral membrane protein of small synaptic vesicles in brain and endocrine cells.[supplied by OMIM]
Species/Host	Rabbit
Reactivity	Human, Mouse, Rat
Conjugation	Unconjugated
Tested Applications	ICC, IF, IHC-Fr, IHC-P, WB
Immunogen	Recombinant protein encompassing a sequence within the C-terminus region of human Synaptophysin. The exact sequence is proprietary.
Form/Appearance	Liquid: 1XPBS, 20% Glycerol (pH7). 0.025% ProClin 300 was added as a preservative.
Concentration	0.25 mg/ml
Storage	Store as concentrated solution. Centrifuge briefly prior to opening vial. For short-term storage (1-2 weeks), store at 4°C. For long-term storage, aliquot and store at -20°C or below. Avoid multiple freeze-thaw cycles.
Note	For research use only.
Isotype	IgG
Clonality	Polyclonal
Purity	Purified by antigen-affinity chromatography.
Uniprot ID	P08247
Entrez	6855
Dilution Range	WB: 1:500-1:50000, ICC: 1:100-1:1000, IHC-P: 1:100-1:1000



Mouse tissue extract (50 µg) was separated by 12% SDS-PAGE, and the membrane was blotted with Synaptophysin antibody (GRP550) diluted at 1:50000. The HRP-conjugated anti-rabbit IgG antibody was used to detect the primary antibody.



Human tissue extract (30 µg) was separated by 12% SDS-PAGE, and the membrane was blotted with Synaptophysin antibody (GRP550) diluted at 1:500. The HRP-conjugated anti-rabbit IgG antibody was used to detect the primary antibody, and the signal was developed.