

# DER BUNTE TOBIAS

## PRESTAINED PROTEIN LADDER

### Kit content

Der bunte Tobias: 500 µL x 1 vial / 500 µL x 5 vials

CAT-NO.	SIZE	RANGE
GRP13284	1 x 500 µL	6.5 - 270 kDa
GRP13285	5 x 500 µL	6.5 - 270 kDa

### Description

Der Bunte Tobias is a prestained protein ladder including a combination of 10 pre-stained proteins with molecular weights from 6.5 to 270 kDa. The 10 recombinant proteins are covalently coupled with blue chromophore, while 2 orange bands at 30 kDa and 270 kDa and a green band at 52 kDa serve as reference bands. Der Bunte Tobias keeps track of the size and separation of proteins during SDS-polyacrylamide gel electrophoresis, approximating protein size and validating Western transfer efficiency on PVDF, nylon, or nitrocellulose membranes.

### Storage conditions

- Stable up to 2 weeks at 25°C
- Stable up to 3 months at 4°C
- Stable up to 24 months at -20°C

### Storage buffer

62.5 mM Tris-H<sub>3</sub>PO<sub>4</sub> (pH 7.5 at 25 °C), 1 mM EDTA, 2% SDS, 10 mM DTT, 1 mM NaN<sub>3</sub>, 33% glycerol.

### Required materials but not provided

- Vertical electrophoresis system
- Power supplies
- Vortex or equivalent
- Microcentrifuge

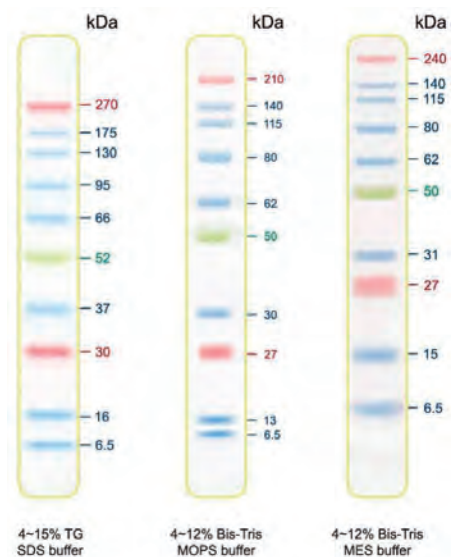
### Reaction setup

3 µl or 5 µl per loading for clear visualization during electrophoresis on 15-well or 10-well mini-gel, respectively. 2.5 µl per well for general Western transferring.



### Guide for Molecular Weight Estimation (kDa)

Refer to Der Bunte Tobias prestained protein ladder patterns in various electrophoresis conditions:



### Important note

The molecular weight of each protein (kDa) was measured against an unstained protein ladder in every electrophoresis condition. Additional data should be considered for a more accurate adjustment.